

NOTE:
 SHADED AREA DEEDED FOR
 WALKWAY PURPOSES. THIS
 PLAN SUPERSEDES ALL
 PREVIOUSLY COMPLETED MAPS

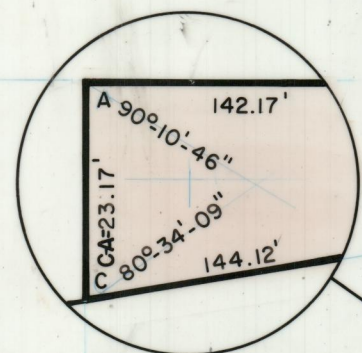
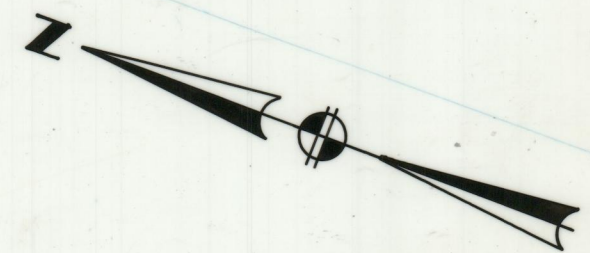
PLAT OF

FENNER STREET

Widening - Public Walkway
From Cathedral Square To A Point
79±' Northwest Of Pond Street

Scale 1"=40'

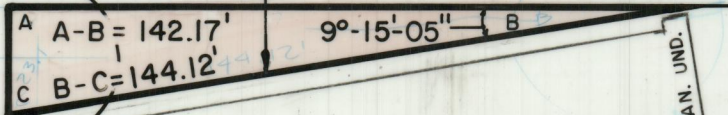
PROVIDENCE R. I.
 P. W. DEPT. - ENGINEERING OFFICE
 STREET LINE SECTION
 Plan No. 064264
 Date November 3, 1983



CATHEDRAL SQUARE

WIDTH VARIES

FENNER STREET



40.15'

POND STREET

PREPARED BY
GAROFALO
 LEONARD A. GAROFALO & ASSOCIATES, INC.
 ENGINEERS / SURVEYORS / PLANNERS
 SUITE 4A, 101 DYER STREET
 PROVIDENCE, R.I. 02903
 DATE: JANUARY 5, 1981

OFFICE NO. 27330
 DRAWER 89
 SHEET B-27